



**SILVERSTONE**<sup>®</sup>  
Designing Inspiration

# **EC05** *MANUAL*

PCI Express Card with 2 SATA 6Gbps internal ports

## Introduction

SilverStone created an excellent expansion card product, the EC05, which connects to the motherboard via single lane PCI Express 2.0 slot to support two internal SATA 6Gbps interface with maximum compatibility and stability. The EC05 can be configured to “HyperDuo mode” with one SSD and one HDD to support boost speed with SSD. It can also be configured to “RAID0” to boost HDD transfer speed with 2 HDDs in addition to backing up valuable data through “RAID1.”

## Features

PCI Express 2.0 with single lane (x1) throughput 5Gbit/s.

Supports simultaneous operation of multiple SATA 6Gbps/SATA 3Gbps devices.

Adds two internal SATA 6Gbps ports to the system.

Supports HyperDuo (capacity), HyperDuo (safe), RAID0, RAID1

## Specifications

Model No.	SST-EC05
Form factor	Low profile single lane (X1) PCI Express 2.0
SATAIII controller	Marvell 88SE9130
Ports	SATA 6Gbps internal ports x2
Function mode	HyperDuo (capacity), HyperDuo (safe), RAID0, RAID1
Transfer speed	Up to 5Gbps via PCI Express 2.0 1X slot
Drive Support	SATA HDD or SSD
Port Interface	SATA 6Gbps backwards compatible with SATA 3Gbps / 1.5Gbps
OS Support	Windows XP, Vista, 7(32bit/64bit)

## INSTALLATION 1

### ENGLISH

Install EC05 onto PCIe slot of Motherboard.  
(refer to PIC1)

### DEUTSCH

Installieren Sie die EC05 im PCIe-Steckplatz  
des Motherboards. (vgl. Abb. 1)

### FRANÇAIS

Installez le EC05 dans un emplacement PCIe  
de la carte mère. (voir image 1)

### ESPAÑOL

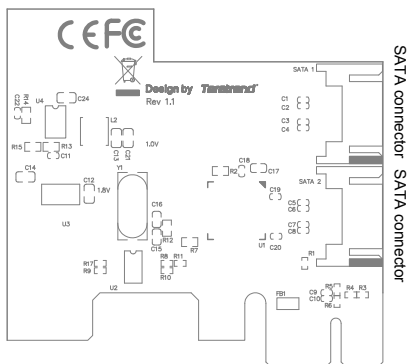
Instale el EC05 en el zócalo PCIe de la placa  
base. (consulte la IMAGEN1)

### ITALIANO

Inserisci EC05 nello slot PCIe della scheda  
madre. (fare riferimento alla PIC1)

### РУССКИЙ

Установите плату EC05 в гнездо PCIe  
материнской платы. (см. рисунок 1)



### 繁體中文

將EC05 安裝於主機板上的PCI-E插槽。  
(請參考圖一)

### 簡体中文

将EC05 安装于主机板上的PCI-E插槽。  
(请参考图一)

### 日本語

EC05 をマザーボードのPCIeスロットにインストールします。(図1.参照)

### 한국어

EC05 을 메인보드의 PCIe 슬롯에 장착합니다.  
(PIC 1 참조)

# INSTALLATION 2

## ENGLISH

Install the Marvell 9130 driver.

## РУССКИЙ

Установите драйвер Marvell 9130.

## DEUTSCH

Installieren Sie den Marvell 9130-Treiber.

## 繁體中文

安裝Marvell 9130驅動程式

## FRANÇAIS

Installez le pilote de Marvell 9130.

## 簡體中文

安裝Marvell 9130驱动程序

## ESPAÑOL

Instalar el controlador Marvell 9130.

## 日本語

Marvell 9130ドライバをインストールします

## ITALIANO

Installare il driver Marvell 9130.

## 한국어

Marvell 9130 드라이브를 설치합니다.

## INSTALLATION 3

### ENGLISH

After the driver is installed, "Marvell 91xx SATA 6G Controller" will appear under Device Manager(refer to PIC2)

### DEUTSCH

Nach Installation des Treibers wird im Geräte-Manager „Marvell 91xx SATA 6G Controller“ angezeigt.(vgl.Abb.2)

### FRANÇAIS

Lorsque le pilote a été installé, "Marvell 91xx SATA 6G Controller" apparaîtra dans Gestionnaire des périphériques.(voir image 2)

### ESPAÑOL

Una vez instalado el controlador, "Controlador Marvell 91xx SATA 6G" aparecerá bajo Administrador de dispositivos.

### ITALIANO

Dopo avere installato il driver, sotto Device Manager (Gestione periferiche) apparirà la voce "Marvell 91xx SATA 6G Controller".(fare riferimento alla PIC2)

### РУССКИЙ

После установки драйвера в диспетчере устройств отобразится пункт "Marvell 91xx SATA 6G Controller"

### 繁體中文

驅動程式安裝完成後，在裝置管理員中可看見Marvell 91xx SATA 6G Controller

### 簡體中文

驱动程序安装完成后，在装置管理员中可看见Marvell 91xx SATA 6G Controller

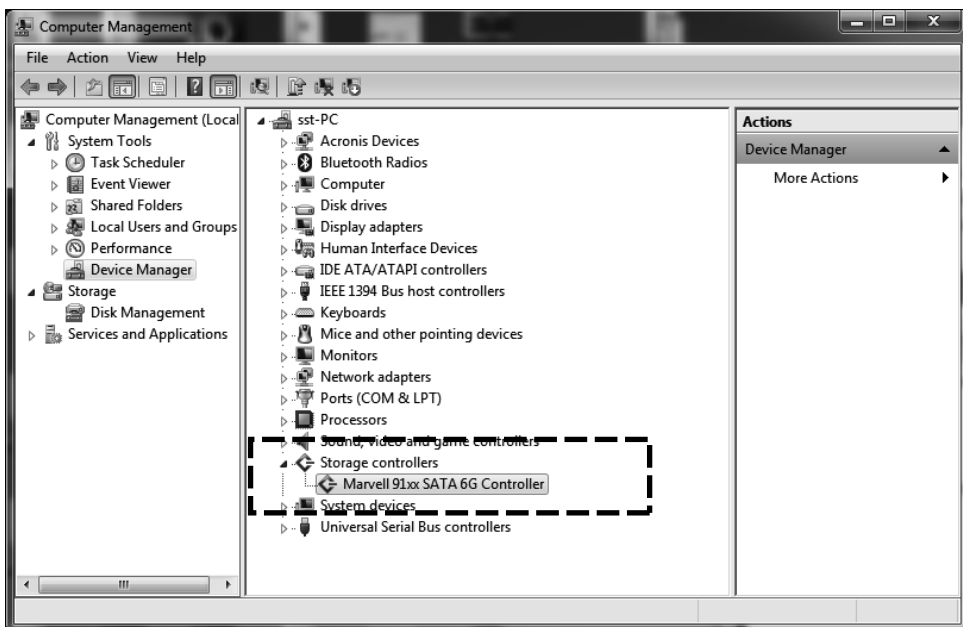
### 日本語

ドライバをインストールした後、デバイスマネージャの下に「Marvell 91xx SATA 6Gコントローラ」が表示されます

### 한국어

드라이브가 설치되면, "Marvell 91xx SATA 6G Controller" 가 장치 관리자에 표시됩니다.

PLEASE SEE EXAMPLE BELOW



PIC2

## INSTALLATION 4

### ENGLISH

Connect your SATAIII hard drive onto the EC05 to complete the installation.

### DEUTSCH

Verbinden Sie Ihre SATA III-Festplatte mit dem EC05 und genießen Sie High-Speed!

### FRANÇAIS

Connectez votre disque dur SATAIII au EC05 pour avoir accès à la haute vitesse !

### ESPAÑOL

Conecte su unidad de disco duro SATAIII al EC05 y disfrute de la alta velocidad!

### ITALIANO

Collegare il disco rigido SATAIII a EC05 ottenendo il massimo rendimento!

### РУССКИЙ

Подключите жесткий диск SATAIII к EC05 и наслаждайтесь высокой скоростью!

### 繁體中文

將您的SATAIII硬碟連接至EC05開始享受高速傳輸速度。

### 簡體中文

將您的SATAIII硬盤連接至EC05開始享受高速傳輸速度。

### 日本語

SATAIIIハードドライブをEC05に接続すると、高速な動作をお楽しみいただけます!

### 한국어

SATAIII 하드 드라이브를 EC05에 연결하고 빨라진 속도를 즐기십시오!

*SilverStone Technology Co., Ltd.*

---

**[www.silverstonetek.com](http://www.silverstonetek.com)**

---

[support@silverstonetek.com](mailto:support@silverstonetek.com)

Issus date: March, 2012